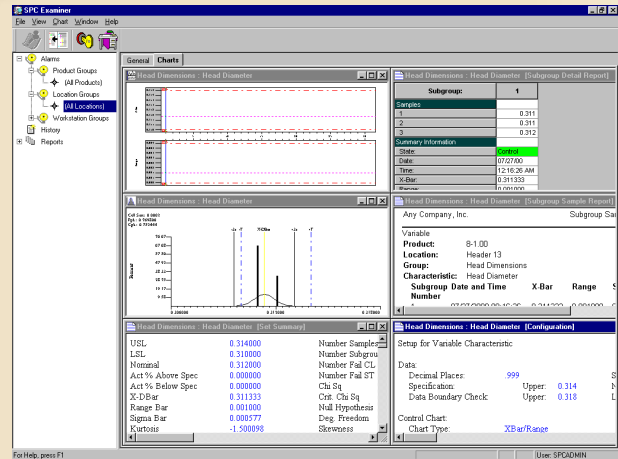


Powerway® Factory Floor Performance Powerway SPC

Powerway SPC collects, analyzes, distributes and maintains process control data.



- Mouse-less interface option makes even harsh environments appropriate for Windows clients.
- Color-coded alarms instantly reveal problems with process behavior.
- Highly flexible configuration provides you with the ability to apply the software to unique situations.
- Variable subgroup sizes and sample frequencies allow you significant freedom in configuration.
- Configuration objects make Powerway SPC simple to configure, even when the part and process is complex.

Reducing nonconformance begins with a solid quality planning process. Powerway SPC was built for quality professionals who insist that SPC be deployed as close to the process as possible to assure rapid response to changes in process behavior. It collects, analyzes, distributes and maintains process control data.

Data Collection

Powerway SPC begins with the shop floor, where data can be collected with or without operator input. The operator can collect data via hand held or bench style gages or through the keyboard. Powerway SPC interfaces with numerous digital and analog devices. Your account representative can assist you with specific interfacing options to meet your needs.

Data Analysis

Powerway SPC instantly converts raw data into meaningful results by drawing on all the chart types you expect to find in an SPC software product. The charts include X-bar/R, X-bar/S, median and individuals with moving range, histograms, Pareto, P, C, U and nP. It also provides summary statistics that include all the process and capability statistics, measurement of skewness, kurtosis and chi square as well as providing for normal and non-normal distributions.

Powerway® Factory Floor Performance

Powerway SPC

Enterprise Distribution

Powerway SPC uses secure client/server technology to distribute meaningful information to anyone who needs access to data, charts, reports and alarms. Process engineers can investigate machine capability during process planning; analysts can assemble data to investigate unusual patterns of variation; quality engineers can obtain real time alarms that demonstrate instantly when corrective action is required; and operators can look at control charts, entering assignable causes as required.

Auditable Records

Powerway SPC keeps detailed records making maintenance of an audit trail almost fun. It catalogs your files and records for you. All it takes is a simple query to retrieve information based upon time, process, process location, part number, or by one of numerous user-configurable traceability sources.

Three Modules for Three Different Users

SPC Operator gives you data collection where you really need it—at the point your products are actually produced. Data are presented to the operator in a graphic format and can be collected with or without operator input. There are three user interface options, including one that may be used in a mouse-less environment.

SPC Examiner provides real-time data for supervisors, managers, and analysts directly from their desktops. This information includes all charts and reports available to the operator, access to historical information, a robust set of summary reports, and color-coded alarms.

SPC Administrator is highly customizable to your specific environment. The Administrator can set statistical rule failure criteria, assignable causes to be entered on a failure, operator access, and many other options.

Powerway Suite 2000

Powerway SPC is one of the modules that make up Powerway Suite 2000. From design through production, Powerway Suite 2000 automates paper-intensive engineering, quality and manufacturing processes, helping you reduce costs, improve quality and speed time to market. Powerway software is designed to work together to provide complete paperless document and data control, advanced quality planning, integrated quality management, and real-time factory floor data collection.



The Project Technologies Group, a Powerway Partner

(248) ISO-1234 info@projecttech.com <http://projecttech.com>